



MONTHLY MEMBERSHIP PROGRESS REPORT

District 16 N

Results as of: 8/31/2016

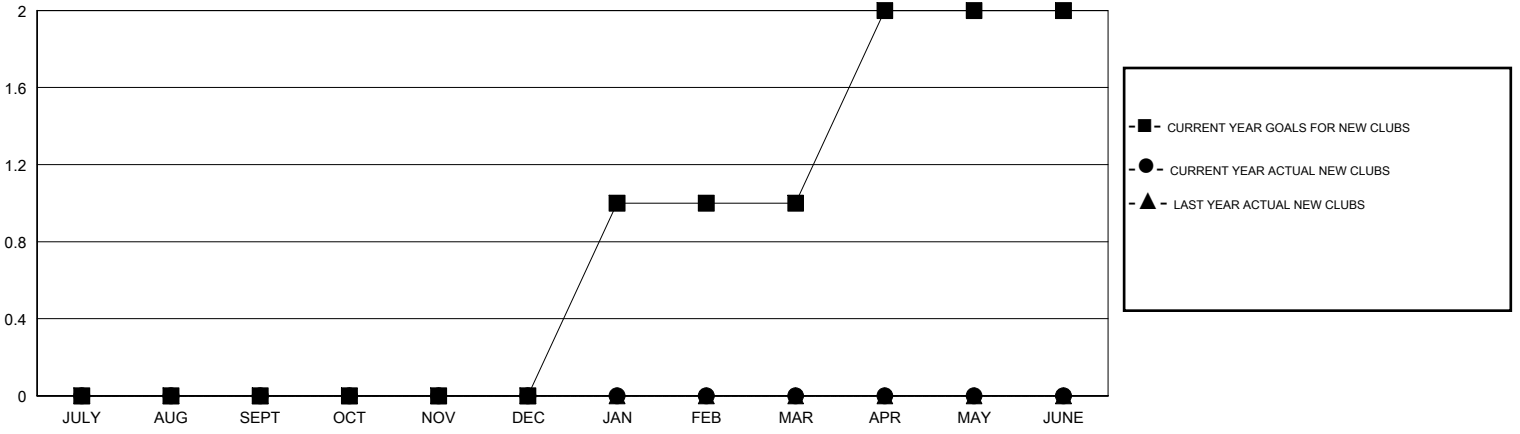
GMT: OPEN

LOCATION NEW JERSEY

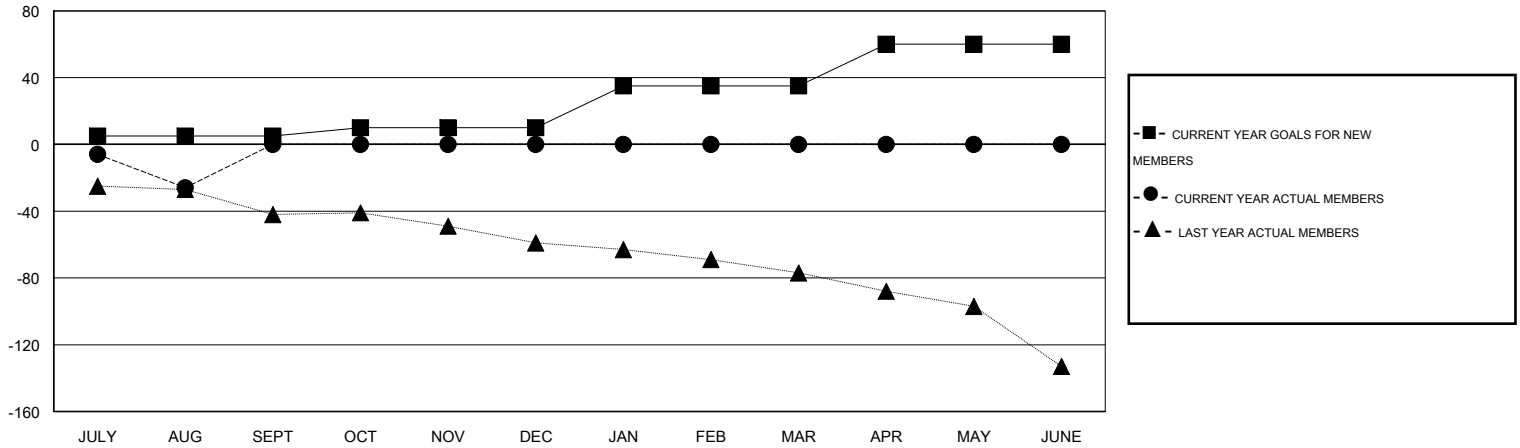
GMT CA 1

| Clubs | | | | | Members | | | | |
|-----------------------|---------------|-----------|---------------|---------------|-----------------------|-----------------|-------------------------------|-----------------|---------------|
| RESULTS FOR 2016-2017 | | | | | RESULTS FOR 2016-2017 | | | | |
| QUARTER | NEW CLUB GOAL | NEW CLUBS | DROPPED CLUBS | NET GAIN/LOSS | QUARTER | NEW MEMBER GOAL | CHARTER AND NEW MEMBERS ADDED | DROPPED MEMBERS | NET GAIN/LOSS |
| JULY/AUG/SEPT | 0 | 0 | 0 | 0 | JULY/AUG/SEPT | 5 | 10 | 36 | -26 |
| OCT/NOV/DEC | 0 | 0 | 0 | 0 | OCT/NOV/DEC | 5 | 0 | 0 | 0 |
| JAN/FEB/MAR | 1 | 0 | 0 | 0 | JAN/FEB/MAR | 25 | 0 | 0 | 0 |
| APR/MAY/JUNE | 1 | 0 | 0 | 0 | APR/MAY/JUNE | 25 | 0 | 0 | 0 |

GOALS AND ACTUAL NEW CLUBS CUMULATIVE



GOALS AND ACTUAL MEMBERS CUMULATIVE



| | | | |
|------------------------|---|----------------------------------|----------------|
| DROPPED CLUBS: 0 | 7 CLUBS OF 61 ADDED 1 OR MORE NEW MEMBERS | <u>GENDER DISTRIBUTION</u> | |
| <u>DROPPED MEMBERS</u> | | MALE | 1,128 (73.97%) |
| DECEASED | 5 | FEMALE | 397 (26.03%) |
| CLUB CANCELLED | 0 | <u>FAMILY UNIT MEMBERS</u> 227 | |
| OTHER | 31 | <u>HEAD OF HOUSEHOLD</u> 108 | |
| TOTAL | 36 | <u>NON-HEAD OF HOUSEHOLD</u> 119 | |

[CLICK HERE FOR HEALTH ASSESSMENT DATA](#)